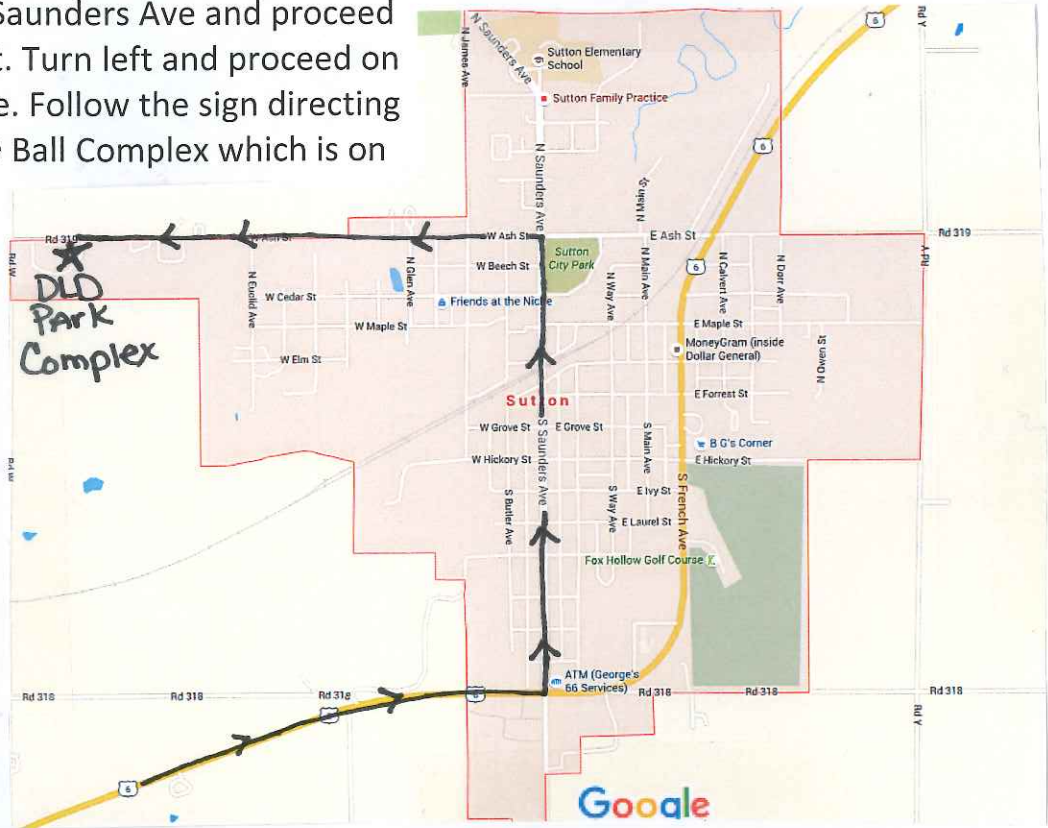


# Directions to DLD Ball Complex

**-From Highway 6 west:** From Highway 6, turn left onto Saunders Ave and proceed north to Ash St. Turn left and proceed on Ash St one mile. Follow the sign directing you to the DLD Ball Complex which is on your left.



**-From Highway 6 east:** From Highway 6, turn right on to Ash St. Proceed on Ash St. 1.5 miles where you will see signs directing you to the DLD Ball Complex, which will be on your left.



